



"The Future Starts Here"

Principal's Message

Dear Valley View Families,

This week was an exciting one! I want to thank the PTO for all of the treats and support they provided for Valley View Staff this week during Teacher Appreciation Week. We loved all of the special treats. Also, we would like to thank the families for taking time to make our days special. I love seeing all of the flowers around the school.



A special staff treat!

A huge shout out to Ms. Kennedy for the beautiful face masks with our owl mascot on them. That was very generous and greatly appreciated.



Mrs. Klemish and her class showing off their new masks. Students went back to being socially distanced after the picture was taken.

I also want to thank the PTO for our special Planting Event with the students. They had so much fun!



Students making planting "bombs". "Toss, Water, Bloom"

I hope you enjoy Mother's Day weekend!

Jessica Bruenn, Principal

jbruenn@portlandct.us



Field Day

Dear Valley View Families,

Valley View is very excited to announce our plans for this year's Field Day! Our Field Day stations will also be spread out to accommodate for more space between groups.

Additionally, we are looking for one parent to help run each station. Parents running a station will help students understand the game rules, spray down any equipment for the next group, and set up for additional Field Day groups. If you would like to volunteer, you can click on the following Google Form to fill

out: https://docs.google.com/forms/d/1yaN1bCy4a8PpkEL9_kkTLMQxLgp7XdNwHKcN84WyxU0/edit

Field Day will occur on Friday, June 4th, with a rain date of Monday, June 7th. To keep all our students safe, we have split kindergarten and first grade to modify Field Day from what we have done in the past. Instead of a full-day event, we are looking to host Field Day with Kindergarten students in the morning, from 9:00 am - 10:15 am, and first-grade students in the afternoon from 1:00 pm - 2:15 pm.

PVLA students are invited to attend Field Day as well. More information will be sent to PVLA students regarding participation.

KINDERGARTEN REGISTRATION

VALLEY VIEW SCHOOL, PORTLAND

for School Year 2021-2022

Parents/guardians whose children will be five years of age on or before January 1, 2022, should:

1. *Contact Valley View School at pgross@portlandct.us to let us know you will be registering your child for kindergarten. Please provide your child's full name, phone number and address.*

Further information regarding kindergarten registration will be provided once you contact the school.

Nurse News



Nurse Katie, kwilliams@portlandct.us

I hope all the mom's have a wonderful Mother's Day this weekend!

A few reminders:

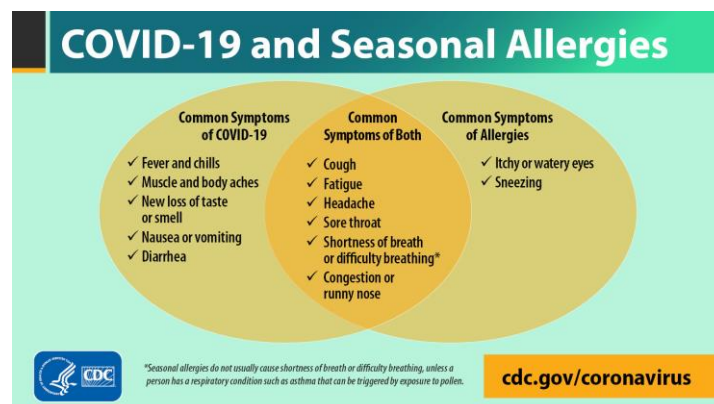
Medications that are needed at school require a completed Medication Administration form by both the doctor and the parent. This not only applies to prescriptions but also

includes over the counter medications and sunscreen. All medication is kept in the nurse's office and needs to be brought into school by a parent/guardian, not sent in the child's backpack. We appreciate your assistance.

Please make sure to wash your child's mask every day or provide a new disposable one every day. Also, masks with valves and neck gaiters are not allowed.

Please send in a change of seasonally appropriate clothing for your child if you have not done so already, especially pants, underwear, and socks, as the occasional accident or spill may require a change of clothes. Make sure to label your child's belongings in a ziploc bag and they can be kept in the classroom. I have extremely limited clothing bottoms availability in my office. Any donations of gently used leggings or sweatpants or shorts size 6 and up are welcome!

*As we approach the end of the year, we have a lot of fun things planned for the students. Please make sure that you are monitoring symptoms at home – and **please do not send any children to school who are ill or have any COVID-19 symptoms.** Students need to be symptom free for at least 24 hours before returning to school. If you keep your child home with illness symptoms, we may follow up with you for more information and also to discuss expectations regarding clearance to come to school. Children with symptoms who are dismissed from school must receive either a negative PCR test to return to school or have a doctor's note clearing them to return with an alternate diagnosis. Contact your child's pediatrician for further guidance if needed and please don't hesitate to reach out to me (kwilliams@portlandct.us or 342-3226) with any questions.



Reminders:

No peanut butter or peanut products are allowed at Valley View.

Medications that are needed at school require a completed Medication Administration form by both the doctor and the parent. This not only applies to prescriptions but also includes over the counter medications and sunscreen. All medication is kept in the nurse's office and needs to be brought into school by a parent/guardian, not sent in the child's backpack. We appreciate your assistance.

Please make sure to wash your child's mask every day or provide a new disposable one every day. Also, masks with valves and neck gaiters are not allowed.

Please send in a change of seasonally appropriate clothing for your child if you have not done so already, especially pants, underwear, and socks, as the occasional accident or spill may require a change of clothes. Make sure to label your child's belongings in a ziploc bag and they can be kept in the classroom. I have extremely limited clothing bottoms availability in my office. Any donations of gently used leggings or sweatpants or shorts size 6 and up are welcome!

*Please make sure that you are monitoring symptoms at home – and **please do not send any children to school who are ill or have any COVID-19 symptoms.** Students need to be symptom free for at least 24 hours before returning to school. If you keep your child home with illness symptoms, we may follow up with you for more information and also to discuss expectations regarding clearance to come to school. Children with symptoms who are dismissed from school must receive either a negative **PCR test** to return to school or have a **doctor's note** clearing them to return. Contact your child's pediatrician for further guidance if needed and please don't hesitate to reach out to me (kwilliams@portlandct.us or 342-3226) with any questions.

 <p>COVID 19 SYMPTOMS NO CLOSE CONTACT with person diagnosed with COVID 19</p>	 <p>Notify the School STAY HOME & GET TESTED</p>	<p>Negative Test Return to school once there are no symptoms for 24 hours without use of medication.</p> <p>Individual is Not Tested Stay in self-isolation for at least 10 days since the onset of symptoms and until at least 24 hours have passed with no fever (without fever reducing medications) and with improvement of other symptoms. Can return to school after 7 days if note is provided from healthcare provider with accurate diagnosis.</p> <p>Positive Test Stay in self-isolation for at least 10 days since the onset of symptoms and until at least 24 hours have passed with no fever (without fever reducing medications) and with improvement of other symptoms.</p>
 <p>COVID 19 SYMPTOMS And CLOSE CONTACT with person diagnosed with COVID 19</p>	 <p>Notify the School STAY HOME & GET TESTED</p>	<p>Negative Test Stay in self-isolation for at least 10 days since the onset of symptoms and until at least 24 hours have passed with no fever (without fever reducing medications) and with improvement of other symptoms.</p> <p>Individual is Not Tested Stay in self-isolation for at least 10 days since the onset of symptoms and until at least 24 hours have passed with no fever (without fever reducing medications) and with improvement of other symptoms.</p> <p>Positive Test Stay in self-isolation for at least 10 days since the onset of symptoms and until at least 24 hours have passed with no fever (without fever reducing medications) and with improvement of other symptoms.</p>
 <p>NO COVID 19 SYMPTOMS But CLOSE CONTACT with person diagnosed with COVID 19</p>	 <p>Notify the School STAY HOME & GET TESTED</p>	<p>Negative Test Remain home in self-quarantine for 10 days from last exposure to the person diagnosed with COVID 19. Option to reduce quarantine time to 7 days if a negative PCR test is completed on or after day 5 and documentation is provided. Continue to monitor for symptoms for 14 days total.</p> <p>Individual is not tested Remain home in self-quarantine for 10 days from last exposure to the person diagnosed with COVID 19. Continue to monitor for symptoms for 14 days total.</p> <p>Positive Test Stay home in self-isolation until 10 days have passed since the date of the positive COVID 19 test or onset of symptoms.</p>

Key symptoms of COVID-19: fever (temp 100.4 F and above) chills, uncontrolled new cough, shortness of breath, difficulty breathing, loss of taste or smell. **Nonspecific symptoms:** muscle or body aches, sore throat, nausea, vomiting, diarrhea, headache, fatigue, congestion/runny nose.
CLOSE CONTACT: Spending at least 15 minutes within 6 feet of a person with confirmed COVID-19, or a direct exposure to possibly infected droplets of saliva or nasal mucus (e.g., being sneezed or coughed on in the face).

<https://www.cdc.gov/coronavirus/2019-ncov/prevent-getting-sick/about-face-coverings.html>

Social Work



Mrs. Bailey, m Bailey@portlandct.us

Announcements:

Summer Programs and More from Portland Parks and Recreation

Summer Quest

We are accepting registrations for this year's Summer Quest programs. Kidde Camp is a 6-week program that runs from 8:30am - 1:00pm. Summer Quest Base Camp and Teen Camp are both 8-week programs that run from 8:30am - 3:30pm.

Kiddie Camp (ages 3-5)

[Week 1 \(June 28 - July 2\)](#)

[Week 2 \(July 6 - July 9\)](#)

[Week 3 \(July 12 - July 16\)](#)

[Week 4 \(July 19 - July 23\)](#)

[Week 5 \(July 26 - July 30\)](#)

[Week 6 \(August 2 - August 6\)](#)

Base Camp (entering grades 1-6)

[Week 1 \(June 28 - July 2\)](#)

[Week 2 \(July 6 - July 9\)](#)

[Week 3 \(July 12 - July 16\)](#)

[Week 4 \(July 19 - July 23\)](#)

[Week 5 \(July 26 - July 30\)](#)

[Week 6 \(August 2 - August 6\)](#)

[Week 7 \(August 9 - August 13\)](#)

[Week 8 \(August 16 - August 20\)](#)

Skyhawks MultiSport Programs at Riverfront Park (May 1, May 8, May 15, and May 29)

[MultiSport \(age 2\)](#)

[MultiSport \(age 3\)](#)

[MultiSport \(ages 4-5\)](#)

AbraKaDoodle Storytellers in the Park! (Thursdays from May 6 - June 10)

[Storytellers in the Park! \(ages 2-3\)](#)

[Storytellers in the Park! \(ages 3-5\)](#)

[Storytellers in the Park! \(ages 5-12\)](#)

Youth Golf Programs with Gerry at Portland West

[May 2021 Grades K-2](#)

[May 2021 Grades 3-8](#)

[June 2021 Grades K-2](#)

[June 2021 Grades 3-5](#)

[Chess Wizards - Online Chess Camp \(June 28 - July 2, ages 6-12\)](#)

Kids' Blast

Parks and Rec. is accepting Kids' Blast applications for the 2021-2022 school year. Online registration is not being offered for this program. Please click [here](#) to find a writable pdf of our Kids' Blast application. Applications can be mailed to Portland Parks and Rec. at P.O. Box 71 in Portland and must be accompanied by a non-refundable registration fee of \$20. All applications are processed on a first come first

served basis. Please email me at adionne@portlandct.org with any questions about this year's Kids' Blast program.

Please contact our Social Worker, Mrs. Bailey, if you need help providing your child with a snack or have any other needs you need help with. To reach our Social Worker, please email mbailey@portlandct.us.

Community News

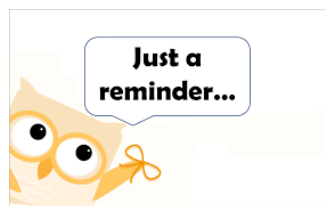
Solidarity with our AAPI Community Members: Action Steps

Portland Social Justice Coalition will host a community conversation on Zoom, Wednesday, May 12th @6:30pm. This event is a follow-up to last month's viewing and discussion of the PBS [interview](#) "How to address the surge of anti-Asian hate crimes." Participants will discuss concrete steps that can be taken in Portland to increase education and awareness about Asian American/Pacific Islander history and culture, and to combat racism. All are welcome to join the conversation. Students are invited to attend with a parent/guardian. Email portlandsocialjustice@gmail.com for the Zoom link. May is Asian Pacific Heritage Month - learn more at asianpacificheritage.gov.

SBHC (School Based Health Care)

<https://drive.google.com/file/d/1J8t739fuXuh5hd0c7zv8DbbQ-01ZkhLK/view?usp=sharing>

Important



Please make sure to have your car tag displayed on your dashboard so we can easily identify who is being picked up. If you need a car tag, please contact us at vvattendance@portlandct.us.

Also, please remember that cars should not pass other cars during parent drop off or pick up time because it could be dangerous to do so. Please stay in line in your vehicle and pull up to the appropriate cone that is next from the car in front of you. If there is an emergency, tell the person at the cone and someone will direct traffic if needed.

Dismissal Pick-Up Times (Please come at your assigned time. If you come early it holds up our line.)

Head Start: 2:30

Grade One: 2:50

Grade: Preschool and Kindergarten 3:00

Siblings: 3:00

Dismissal Plans

If your child normally rides the bus and you are picking them up, please send an email to vvattendance@portlandct.us or call the school in the morning, if possible, so we can plan for a safe dismissal. We are trying to eliminate notes being sent in and delivered to the office, so please do not send in a note.

If you have any changes in your transportation plan, please email your plans through vvattendance@portlandct.us as soon as possible. It takes time to arrange changes in busing.

Technology Information

Please use the following link to report Chromebook tech issues or needs:

<https://app.pipefy.com/public/form/eT-jSPH5>

There is also a link on the school website under Faculty Links, Student Links, and Parent Resources.



Monday, May 3rd to Monday, May 31st - School Climate Survey (A link will be sent from Panorama)

May 14 - No School for Kindergarten Students Only - Kindergarten Registration/Screening

May 14 - Grade One Transition Day - Visit to Gildersleeve

May 26 - 2 hour Delayed Opening, School Spirit Day - wear red or your Valley View T-Shirt and your VV Mask

May 31 - No School - Memorial Day

June 4 - Field Day - Rain Date June 7

June 8 - First Grade Farewell - Rain Date June 10

June 11 - Kindergarten Celebration, Rain Date June 14

June 10 - Preschool End of the Year Event

June 16 - Early Dismissal (11:50 for Grade 1 and 12:00 for Kindergarten- Last Day of School)

More information will be provided by your child's teacher regarding special end of the year events. Please be aware that all PVLA students are invited to attend end of the year events.

Valley View



Be Safe

Be Responsible

Be a Friend

860-342-3131 FAX: 860-342-3138

Attendance Email: vvattendance@portlandct.us